



GRANGE PARK SURGERY

STAFF NEWS

Dr Sarah Hattam has joined the surgery as a permanent part time GP. She is an experienced GP having previously worked in Bingley. She holds surgeries on Mondays and Tuesdays. Her special interests are contraception, sexual health, women's health and mental health.

Dr Alison Holt will be going on maternity leave around September time. We wish her well and look forward to meeting the new arrival.

Dr Sara Khoshneviszadeh (known as Dr Sara), our registrar, had a little girl, Sophia, in November. Dr Sara is now back with us to complete her GP training for the next 4 months.

Sister Christine Reilly is our new practice nurse working alongside Sister Anne Richardson. We are happy to welcome her to the surgery.

Donna one of our receptionists had a little girl, Lily, in May. She is now on maternity leave and we look forward to her return early next year. **Carol** is covering her maternity leave and we welcome her to the team.

TEST RESULTS/REPEAT PRESCRIPTIONS

Please could patients ring for any test results and repeat prescriptions **after 2 pm.**

JUNE 2011

TELEPHONE CALLS

If a patient needs to speak to a doctor **urgently** the call will be put through to the on call doctor that day.

If a patient wishes to speak to a particular doctor, a telephone appointment can be made. If the patient needs to speak to the doctor before the next available appointment, the doctor will be asked to ring the patient the next time they are in the surgery. It is not always possible to speak to a particular doctor on the day the patient rings.

SURGERY WEBSITE

The website is now up and running. Please check it out for useful information. The address is

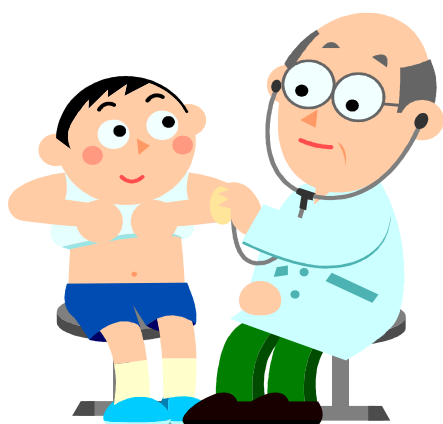
www.grangeparksurgery.co.uk

Prescriptions can now be ordered online but patients need to come into the surgery to be given access codes before ordering prescriptions for the first time – **please bring ID with you (eg passport, birth certificate etc).**

PTO

BLOOD PRESSURE MACHINE

There is a blood pressure machine situated at the far end of the waiting room. Patients are encouraged to use this while waiting for their appointment and take the results (which are printed out) into the doctor. Please make sure your name is written on the back of the result. The instructions are clearly written and easy to follow.



PATIENT PARTICIPATION GROUP

The Grange Park Surgery Patient Participation Group look forward to being involved in the "Burley in Wharfedale Festival Week", by bringing various 'healthy living' themes to the general public on Sunday 21st August. We will, with professional help, offer assistance in identifying health issues and solutions to those people who visit our stand. This is part of the objective of developing improvements in preventative health care and involving the community, as part of a village social event.

If you have an interest in your community and the development of the local healthcare services, why not join our group? We usually meet 6 weekly and hold between 3-4 open meetings per year, on topics that the community puts forward. So far, we have covered mental health, patient summary records and the changes to the Health Service. With the rapidly changing health agenda taking place, it is important that patients are part of the programme.

We now sponsor a "fun" exercise group, run weekly in Salem schoolrooms on Thursday mornings at 9am. Cost only £3. A support group for MS sufferers has been established and takes place once per month. The future development of a rheumatoid arthritis support group is taking shape and perhaps another area of need is in helping those with mental health issues.

It is your patient group, so why not support it, attend the Open Evenings, and tell us what needs changing or improving through the suggestion box.